

Lifud Products for American Markets



Commercial LED Driver

Emergency LED Driver

High Power LED Driver

Globally Certified



Commercial Lighting

- Non-dimmable
- ✓ LF-GIRxxxYK *15-50W IP20 compact, plastic housing
- ✓ 0-10V dimmable
- ✓ LF-GMDxxxYSV *3-65W IP20, rectangular, metal housing
- ✓ LF-GMDxxxYBV *8-65W IP20, rectangular, metal housing
- ✓ LF-GMDxxxYM *19-65W IP20, linear metal, AOC, CCT (DIP switch)
- ✓ LF-GLDxxxYS *11-65W IP20, linear metal, flicker-free (fixed current)
- Triac dimmable
- ✓ LF-GDExxxYD *12-30W IP20, round, plastic housing

Emergency Lighting

- ✓ LF-GSP012YH *5/7/10/12W IP20, Linear Emergency Module
- ✓ LF-GSPxxxYG *5/7/10/12W IP20, Rectangular Emergency Module with Battery Pack

Landscape Lighting

- ✓ LF-GOExxxYV *75-250W IP67, CV, Non-dim

High Power Lighting - non-isolated design

- ✓ LF-FHBxxxYxIV 5 *120-240W UFO, IP65, Non-Dim / 0-10V, Adjustable
- ✓ LF-FHBA/Cxxx *120-240W UFO, IP65, 120-347Vac, 0-10V, Adjustable
- ✓ LF-Fxx *40-80W IP42, Non-Dim / 0-10V, Adjustable
- ✓ LF-Fxx *100-320W IP54, Non-Dim / 0-10V, Adjustable
- ✓ LF-Fxx *100-320W IP67, Non-Dim / 0-10V, Adjustable

High Power Lighting - isolated design

- ✓ LF-GOExxxYE/YF *25-100W IP67, Non-Dim / 0-10V
- ✓ LF-GOExxxYE/YF *110-320W IP67, Non-Dim / 0-10V

Non-dimmable LED Driver (15-55W)

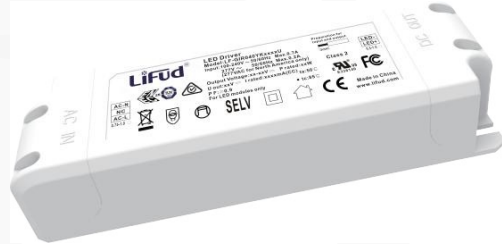
Application: panel light, track light, down light, spot light, ceiling light, etc.



- **Series:** LF-GIRxxxYK
- **Input range:** 100-277Vac
- **Features:**
 1. High efficiency
 2. Low THD
 3. Active power factor correction design
 4. Suitable for Class II light fixtures
 5. Fixed output current (each 50mA)
 6. IP20



* In case of any divergence, the specs in the data sheet shall prevail.



P/N	Pout	Vout	Iout	Efficiency (full load)	PF (full load)	Dimension L*W*H/mm
LF-GIR020YK	20	27-42	350-500	86%(100Vac) 86%(230Vac)	0.98(100Vac) 0.92(230Vac)	119*40*27
LF-GIR030YK	30	27-42	600-750	88%(100Vac) 88%(230Vac)	0.98(100Vac) 0.96(230Vac)	145*43*29
LF-GIR040YK	40	27-42	800-1000	88%(100Vac) 89%(230Vac)	0.98(100Vac) 0.96(230Vac)	145*43*29
LF-GIR050YK	50	27-42	1100-1200	88%(100Vac) 88%(230Vac)	0.98(100Vac) 0.96(230Vac)	155*53*29

0-10V Flicker Free LED Panel Light Driver (3-65W)

Application: panel light



- **Series:** LF-GMDxxxYS V
- **Input range:** 100-277Vac
- **Features:**
 - 0-10V/PMW/Rx dimming (dim to off)
 - Flicker-free
 - The output circuit is isolated from the dimming circuit
 - High efficiency (Conforms to the DLC standards)
 - Fixed output current (each 50mA)
 - Equipped with junction box (pioneer design in the industry)



* In case of any divergence, the specs in the data sheet shall prevail.

P/N	Pout	Vout	Iout	Efficiency (full load)	PF (full load)	Dimension L*W*H/mm
LF-GMD035YS V	35	25-42	100-800	88%(120Vac)	0.95(120Vac)	192*91.5*34
LF-GMD045YS V	45	25-42	800-1100	88%(120Vac)	0.95(120Vac)	192*91.5*34
LF-GMD055YS V	55	25-42	1100-1300	88%(120Vac)	0.95(120Vac)	192*91.5*34
LF-GMD065YS V	65	25-42	1100-1650	88%(120Vac)	0.95(120Vac)	192*91.5*34

US Standard LED Panel Light Driver Series (8-65W)

Applications: panel light, grille light



- **Series:** LF-GMDxxxYB V
- **Input range:** 100-277Vac
- **Features:**
 1. 0-10V/PMW/Rx dimming (dim to off)
 2. The output circuit is isolated from the dimming circuit
 3. High efficiency (Conforms to the DLC standards)
 4. Fixed output current (each 50mA)
 5. Equipped with junction box (pioneer design in the industry)



* In case of any divergence, the specs in the data sheet shall prevail.

P/N	Pout	Vout	Iout	Efficiency (full load)	PF (full load)	Dimension L*W*H/mm
LF-GMD035YB V	35	25-42	300-800	89%(120Vac)	0.97(120Vac)	192*91.5*34.2
LF-GMD045YB V	45	25-42	800-1100	89%(120Vac)	0.97(120Vac)	192*91.5*34.2
LF-GMD055YB V	55	25-42	1100-1300	90%(120Vac)	0.97(120Vac)	192*91.5*34.2
LF-GMD065YB V	65	25-42	1100-1650	90%(120Vac)	0.97(120Vac)	192*91.5*34.2

0-10V Dimming Adjustable LED Driver (19-65W)

Applications: linear light, grille light



- **Series:** LF-GMDxxxYM
- **Input range:** 120-277Vac / 120-347Vac
- **Features:**
 1. Supports 0-10V/PWM dimming (isolated dimming circuit)
 2. Optional fixed and adjustable output currents (via DIP switch)
 3. Supports CCT change (via DIP switch)
 4. Optional 12V auxliary output
 5. Smooth dimming effect with dim-to-off
 6. Complies with the latest DLC standards
 7. Suitable for Class I light fixtures

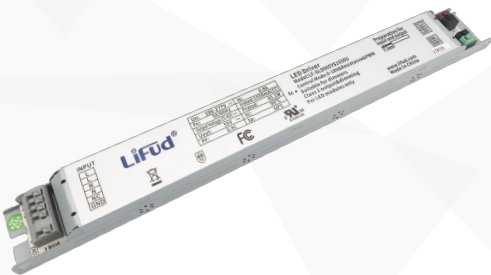
* In case of any divergence, the specs in the data sheet shall prevail.

P/N	Pout	Vout	Iout	Efficiency (full load)	PF (full load)	Dimension (L*W*H)/mm
LF-GMD035YM	35	30-42	350-500-700/ 400-500-650	85%(120Vac)	>0.95(120Vac)	285*30*24
LF-GMD045YM	45	30-42	700-85-1050/ 450-650-800	87%(120Vac)	>0.95(120Vac)	285*30*24
LF-GMD065YM	65	30-42	700-1050-1350/ 700-1050-1500/ 900-1000-1550	87%(120Vac)	>0.95(120Vac)	355*30*24

* Remark: 24mm includes the height of DIP switch.

0-10V Dimming Flicker Free LED Driver (11-65W)

Applications: linear light, grille light



- **Series:** LF-GLDxxxYS
- **Input range:** 100-277Vac
- **Features:**
 1. 3-in-1 dimming: 0-10V/PWM/Rx dimming
 2. Isolated dimming circuit (Conforms to the latest North American safety standard)
 3. Flicker-free
 4. Fixed output current (each 50mA)
 5. Suitable for Class I light fixtures

* In case of any divergence, the specs in the data sheet shall prevail.

P/N	Pout	Vout	Iout	Efficiency (full load)	PF (full load)	Dimension (L*W*H)/mm
LF-GLD025YS	25	25-42	250-550	84%(120Vac) 85%(277Vac)	0.98(120Vac) 0.90(277Vac)	245*30*21
LF-GLD035YS	35	25-42	600-800	84%(120Vac) 86%(277Vac)	0.98(120Vac) 0.90(277Vac)	245*30*21
LF-GLD045YS	45	25-42	800-1100	85%(120Vac) 86%(277Vac)	0.98(120Vac) 0.90(277Vac)	245*30*21
LF-GLD055YS	55	25-42	1100-1300	87%(120Vac) 87%(277Vac)	0.98(120Vac) 0.90(277Vac)	285*30*21
LF-GLD065YS	65	25-42	1300-1550	87%(120Vac) 88%(277Vac)	0.98(120Vac) 0.90(277Vac)	285*30*21

Triac Dimming LED Driver (12-30W)

Applications: down light, spot light



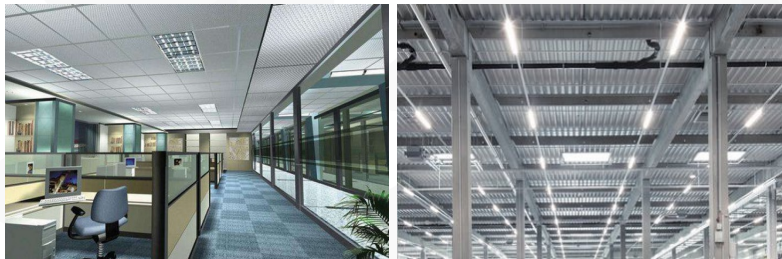
- **Series:** LF-GDExxxYD
- **Input Range:** 100-120Vac
- **Features:** 1. Support triac dimming
2. Active power factor correction design
3. THD $\leq 20\%$
4. Suitable for Class I light fixtures
5. Fixed output current (each 50mA)

* In case of any divergence, the specs in the data sheet shall prevail.

P/N	Pout	Vout	Iout	PF (full load)	Efficiency (full load)	Dimension L*W*H/mm
LF-GDE012YD	12	25-40	200-300	0.90(120Vac)	83%(120Vac)	77*72*29
LF-GDE024YD	24	25-40	350-450	0.90(120Vac)	83%(120Vac)	77*72*29
LF-GDE030YD	30	25-40	650-750	0.90(120Vac)	83%(120Vac)	77*72*29

Emergency Driver (With Independent Battery) (5/7/10/12W) **LIFUD**[®]

Applications: tri-proof, linear light, grille light, etc.



- **Series:** LF-GSP012YH
- **Input range:** 100-277Vac
- **Features:**
 1. Adjustable output emergency power & emergency time:
 - ≥ 90mins (10W/12W), ≥ 2 hrs (7W), ≥ 3 hrs (5W)
 2. supports various LED loads (DC25-48V, I_{out} < 2A)
 3. Independent battery
 4. All-round protections: short circuit, open circuit and under voltage; overcharge, over discharge and reverse connection protection for the battery
 5. Ideal for linear luminaires
- **Warranty:** 5 years (1 year for battery)

* In case of any divergence, the specs in the data sheet shall prevail.

P/N	Pout	Vout	Iout	Spec of Battery	Dimension L*W*H/mm
LF-GSP012YH	12	25-48	100-480mA	2000mAH Ni-Cd battery	245*44*29

Emergency Driver (With Built-In Battery) (5/7/10/12W)

Applications: panel light, ceiling light, grille light, spot light, etc.



- **Series:** LF-GSPxxxYG
- **Input range:** 100-277Vac
- **Features:**
 1. Adjustable output emergency power & emergency time:
 $\geq 90\text{mins}$ (10W/12W), $\geq 2\text{ hrs}$ (7W), $\geq 3\text{ hrs}$ (5W)
 2. supports various LED loads (DC25-48V, $I_{out} < 2A$)
 3. Built-in battery
 4. All-round protections: short circuit, open circuit and under voltage; overcharge, over discharge and reverse connection protection for the battery
 5. Ideal for LED panels etc.
- **Warranty:** 5 years (1 year for battery)

P/N	Pout	Vout	Iout	Specs of battery	Dimension L*W*H/mm
LF-GSP007YG	7	25-48	≤ 300	With built-in 1200mAH nickel-chromium battery	331*91*31
LF-GSP012YG	12	25-48	≤ 500	With built-in 2000mAH nickel-chromium battery	331*91*31

Non-isolated UFO Power + CCT + Current Adjustable Highbay Driver



Pioneer Design

CCT + Current + Power Adjustable



Model: LF-FHBxxxYx IV 5 (120-240W)

Features:

1. Pioneer design—current (via a potentiometer) + power (via DIP switch 1) + CCT (via DIP switch 2) adjustable
2. Lower residual voltage (<2kV) to protect LEDs
3. Surge: L-N: 6kV; L/N-GND: 6kV
4. Optional 12V AUX output (200mA)
5. Flicker free; high efficiency up to 96%; IP65
6. Complies with the latest ErP and DLC standards
7. Dim to off without afterglow (optional)

Warranty: 5 years

Model	Output Power (W, max)	Input Voltage (Vac)	Output Voltage (Vdc)	Output Current Adjustable via a Potentiometer (A)	Efficiency (full load)	Dimension D*H/mm
LF-FHB120YA/B/C IV 5	120	100-277	180-260	0.30-0.50	95%	113*58.6
LF-FHB150YA/B/C IV 5	150	100-277	180-260	0.37-0.75	95.3%	113*58.6
LF-FHB200YA/B/C IV 5	200	100-277	180-260	0.50-0.90	96%	119*58.6
LF-FHB240YA/B/C IV 5	240	100-277	180-260	0.60-1.10	96%	119*58.6

3 versions: non-dimmable (YB); 3-in-1 dimming + 12V AUX output (YA) & 3-in-1 dimming (YC)

120-347Vac Power + CCT + Current Adjustable LED Driver



Super-wide Input Voltage
Suitable for Different Power Grids



Model: LF-HBA/Cxxx (120-240W)

Features:

1. Supports 0-10V/PWM/Rx dimming
2. Super-wide input voltage range: 120-347Vac
3. DIP switch + potentiometer to precisely adjust the output current (power); CCT adjustable via a DIP switch (optional)
4. Lower residual voltage (<2kV) to protect LEDs
5. Surge: L-N: 6kV; L/N-GND: 6kV
6. Optional 12V AUX output (200mA)
7. Flicker free; high efficiency up to 96%; IP65
8. Complies with the latest DLC standard
9. Dim to off without afterglow (optional)

Warranty: 5 years

Model	Output Power (W, max)	Input Voltage (Vac)	Output Voltage (Vdc)	Output Current Adjustable via a Potentiometer (A)	Efficiency (full load)	Dimension D*H/mm
LF-HBA/C120	120	120-347	180-260	0.25-0.50 (300/400/500)	94%	113*58.6
LF-HBA/C150	150	120-347	180-260	0.50-0.75 (370/500/620)	94%	113*58.6
LF-HBA/C200	200	120-347	180-260	0.65-0.9 (500/670/830)	96%	119*58.6
LF-HBA/C240	240	120-347	180-260	0.75-1.1 (600/800/1000)	96%	119*58.6

2 versions: 3-in-1 dimming + 12V AUX output (HBA) & 3-in-1 dimming (HBC)

IP42 Non-isolated LED Driver



Main applications: street light, flood light, wall light, shoebox light

Model: LF-FAx (40-80W)

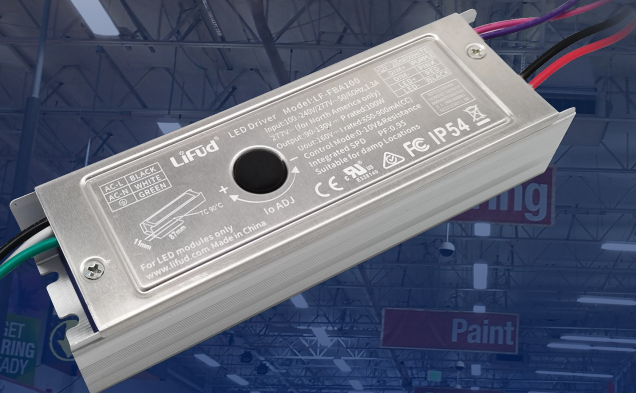
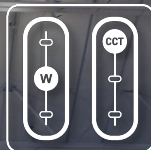
Features:

1. Three versions: 3-in-1 dimming; 3-in-1 dimming+ 12V AUX output; non-dimmable
2. Current adjustable via Potentiometer
3. Support to connect external DIP switch to achieve CCT change & power adjustment
4. Flicker free;
5. IP42; Terminal design
6. The output residual voltage < 2KV, protecting the LEDs from being damaged by high voltage (1-3KV lower than competitors)
7. Surge protection: L-N 4kV/6kV, L/N-GND 6kV

Warranty: 5 years

Model	Output Power (W, max)	Input Voltage (Vac)	Output Voltage (Vdc)	Output Current (mA)	Efficiency (full load)	Dimension D*H/mm
LF-FAx040	40	100-277	180-260Vdc	0.12-0.20	90.0%	139*42.8*26.5
LF-FAx060	60	100-277	180-260Vdc	0.18-0.30	90.0%	139*42.8*26.5
LF-FAx080	80	100-277	180-260Vdc	0.25-0.40	91.0%	149*42.8*26.5

IP54 Non-isolated LED Driver



SKUs Reduced
High Efficiency



Model: LF-Fxx (100-320W)

Features:

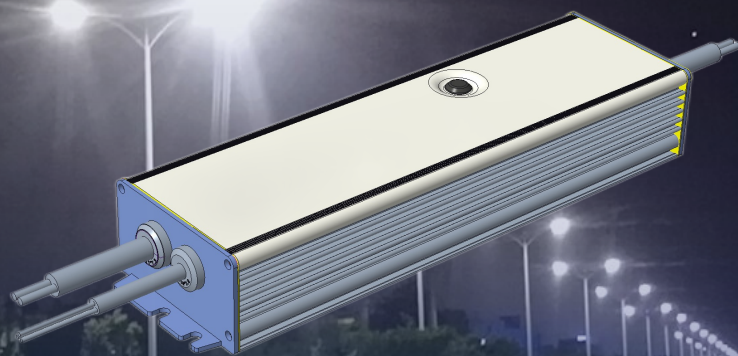
1. Current adjustable via a potentiometer
2. Residual voltage <2kV to protect LEDs
3. Surge: L-N: 4kV/6kV, L/N-GND: 6kV
4. Optional 12V AUX output
5. Flicker free; high efficiency up to 96%
6. Complies with the latest ErP and DLC standards
7. All-aluminum casing design with faster heat-transfer rate to ensure the lifetime of LED driver

Warranty: 5 years

Model	Output Power (W, max)	Input Voltage (Vac)	Output Voltage (Vdc)	Output Current Adjustable via a Potentiometer (A)	Efficiency (full load)	Dimension L*W*H/mm
LF-FBx100	100	100-277	90-130	0.65-0.9	93%	154*48*34
LF-FBx150	150	100-277	90-130	0.9-1.25	93%	154*48*34
LF-FAx100	100	100-277	180-260	0.25-0.50	93%	154*48*34
LF-FAx150	150	100-277	180-260	0.50-0.75	93%	169*48*34
LF-FAx200	200	100-277	180-260	0.65-0.9	95%	169*48*34
LF-FAx240	240	100-277	180-260	0.75-1.1	96%	204*48*34
LF-FAx320	320	100-277	180-260	1.1-1.5	96%	204*48*34

3 versions: non-dimmable (B); 3-in-1 dimming + 12V AUX output (A) & 3-in-1 dimming (C)

IP67 Non-isolated LED Driver



Main applications: street light, linear high bays, flood light, area lights

Model: LF-Fxx (100-320W)

Features:

1. Current adjustable via a potentiometer
2. Support to connect external DIP switch to achieve CCT change & power adjustment
3. Optional 12V AUX output
4. Flicker free; high efficiency up to 96%
5. Complies with the latest ErP and DLC standards
6. IP67, Surge: L-N: 6kV, L/N-GND: 6kV
7. All-aluminum casing design with faster heat-transfer rate to ensure the lifetime of LED driver

Warranty: 5 years

Model	Output Power (W, max)	Input Voltage (Vac)	Output Voltage (Vdc)	Output Current (mA)	Efficiency (full load)	Dimension D*H/mm
LF-FDx100	100	100-277	180-260Vdc	0.25-0.50	93.0%	162*58.8*33
LF-FDx150	150	100-277	180-260Vdc	0.50-0.75	93.0%	177*58.8*33
LF-FDx200	200	100-277	180-260Vdc	0.65-0.90	95.0%	194*58.8*33
LF-FDx240	240	100-277	180-260Vdc	0.75-1.1	96.0%	212*58.8*33
LF-FDx320	320	100-277	180-260Vdc	1.1-1.5	96.0%	231*58.8*37

3 versions: non-dimmable (B); 3-in-1 dimming + 12V AUX output (A) & 3-in-1 dimming (C)

Available in March, 2023

IP67 LED Driver (30-75W)

Application: street light



- **Series:** LF-GOExxxYE/YF
- **Input range:** 100-277V (30-75W)
- **Features:**
 1. 2 options: non-dimmable (YE) & 0-10V&PWM&Rx dimming (YF)
 2. High efficiency up to 90%
 3. High surge protection: L-N: 6KV; L/N-PE: 10KV
 4. Output current adjustable via the potentiometer
 5. IP67

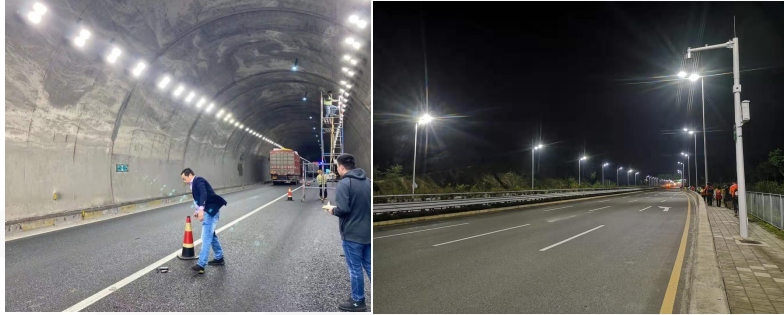


* In case of any divergence, the specs in the data sheet shall prevail.

P/N	Pout	Vout	Iout	Efficiency (full load)	PF	Size L*W*H/mm
LF-GOE030YE/F	30	30-54	0.35-0.85	88%(230Vac)	0.95(230Vac)	149.6*49.6*35.5
LF-GOE050YE/F	50	30-54	0.6-1.4	88%(230Vac)	0.95(230Vac)	165.6*49.6*35.5
LF-GOE060YE/F	60	30-54	1.1-1.7	90%(230Vac)	0.95(230Vac)	147.7*65*35.5
LF-GOE075YE/F	75	30-54	1.35-2.1	90%(230Vac)	0.95(230Vac)	147.7*65*35.5

IP67 LED Driver (110-320W)

Applications: subway/tunnel lighting, street lighting, etc.



- **Series:** LF-GOExxxYE/YF
- **Input range:** 100-277Vac
- **Features:**
 1. 2 options: non-dimmable (YE) & 0-10V&PWM&Rx dimming (YF)
 2. High efficiency up to 95%; IP67
 3. Surge protection: L-N: 6KV; L/N-PE: 10KV
 4. Compatible with positive and negative dimming logics
 5. Output current adjustable via the potentiometer
 6. IP67



* In case of any divergence, the specs in the data sheet shall prevail.

P/N	Pout	Vout	Iout	Efficiency (full load)	PF	Dimension L*W*H/mm
LF-GOE110YE/YF	110	27-56	1.5-3.0	0.95	91%	190.6*69.6*36.6
LF-GOE150YE/YF	150	27-56	1.8-4.2	0.95	92%	190.6*69.6*36.6
LF-GOE200YE/YF	200	27-56	3.0-5.5	0.95	93.5%	227.6*69.6*36.6
LF-GOE240YE/YF	240	27-56	3.5-6.7	0.95	93.5%	227.6*69.6*36.6
LF-GOE320YE/YF	320	27-56	4.0-8.9	0.95	95%	256.6*87*39.5

IP67 CV LED Driver (75-250W)

Applications: the lighting project, the landscape building, LED light box, etc.



- **Model:** LF-GOExxxYV
- **Input voltage:** 220-277Vac/110-277Vac
- **Feature:**
 1. Flicker-free
 2. Adjustable output voltage via the potentiometer
 3. High efficiency up to 93%
 4. IP67
 5. Surge protection: L-N: 6KV, L/N-GND: 8KV

* In case of any divergence, the specs in the data sheet shall prevail.

P/N	Pout	Vout	Iout	Efficiency (full load)	Output Voltage via the Potentiometer	Dimension L*W*H/mm
LF-GOE075YV012A	75	12	0.24 - 6.25	87%(231Vac)	92%-108%	170*61*34
	60	12	0.24 - 5	87%(230Vac)	92%-108%	170*61*34
LF-GOE075YV024A	75	24	0.24 - 3.12	87%(231Vac)	92%-108%	170*61*34
	60	24	0.24 - 2.5	87%(230Vac)	92%-108%	170*61*34
LF-GOE100YV012A	100	12	0.24 - 8.33	90.5%(230Vac)	92%-108%	170*61*34
	75	12	0.24 - 6.25	90.5%(230Vac)	92%-108%	170*61*34
LF-GOE100YV024A	100	24	0.24 - 4.16	90.5%(230Vac)	92%-108%	170*61*34
	75	24	0.24 - 3.12	90.5%(230Vac)	92%-108%	170*61*34
LF-GOE150YV012A	138	12	0.4 - 11.5	93%(230Vac)	92%-108%	170*61*34
	100	12	0.4 - 8.33	93%(230Vac)	92%-108%	170*61*34
LF-GOE150YV024A	150	24	0.4 - 6.25	93%(230Vac)	92%-108%	170*61*34
	100	24	0.4 - 4.16	93%(230Vac)	92%-108%	170*61*34
LF-GOE200YV012A	200	12	0.4 - 16.66	93%(230Vac)	92%-108%	228*63*34
	150	12	0.4 - 12.5	93%(230Vac)	92%-108%	228*63*34
LF-GOE200YV024A	200	24	0.4 - 8.33	93%(230Vac)	92%-108%	228*63*34
	150	24	0.4 - 6.25	93%(230Vac)	92%-108%	228*63*34
LF-GOE250YV024A	250	24	0.4 - 10.41	93%(230Vac)	92%-108%	228*63*34
	200	24	0.4 - 8.33	93%(230Vac)	92%-108%	228*63*34